



Consiliul Judetean Alba mun. Alba Iulia, str. I. C. Brătianu, nr. 1, jud. Alba		beneficiar: Consiliul Judetean Alba mun. Alba Iulia, str. I. C. Brătianu, nr. 1, jud. Alba		faza: PUD
sef proiect: Stelian Ghe Fleschin	scara: 1:10000	proiect: Amenajare zona cuprinsa intre Sala Unirii si Muzeul National al Unirii Alba Iulia - faza PUD jud. Alba, mun. Alba Iulia, str. Mihai Viteazul, CF. 115201 si CF. 115184		
proiectat: Stelian Ghe Fleschin Karina Man	data: 09/2022	denumire planşa: Plan de incadrare		
desenat: Karina Man	desenat: Karina Man	plansa: U00		

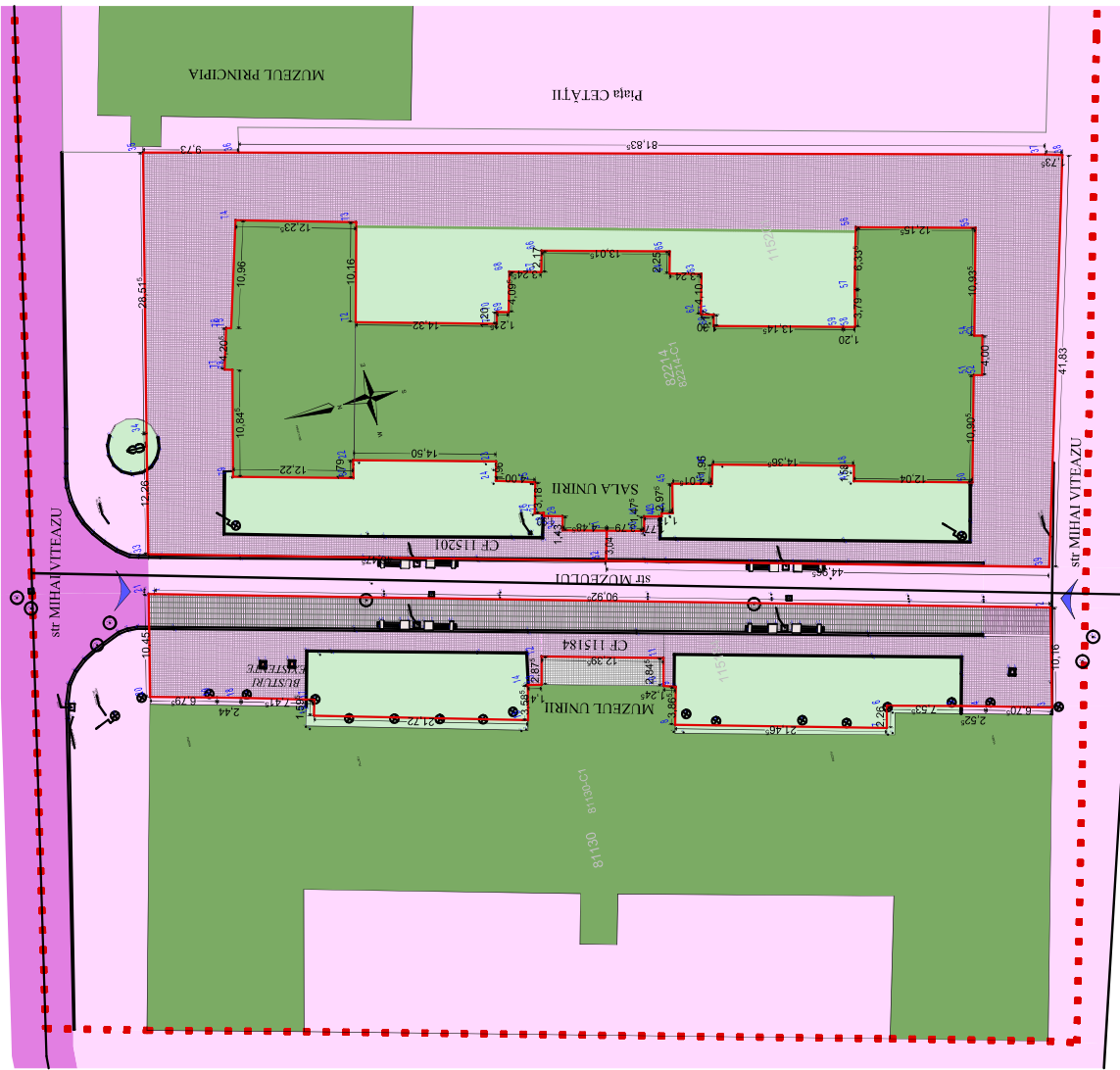
CF 115184

No. Pkt.	Outline points coord. sides	X [m]	Y [m]	Lengths sides L(i+1)
1	506642,627	386616,701	90,324	
2	506554,816	386595,111	10,116	
3	50657,157	386586,254	67,04	
4	506666,092	386607,825	7,533	
5	506573,358	386569,524	2,258	
6	506573,922	386587,338	21,467	
7	506594,659	386592,389	3,864	
8	506594,659	386592,389	3,864	
9	506594,183	386592,016	3,864	
10	506594,183	386592,016	3,864	
11	506594,137	386599,767	12,393	
12	506806,111	386602,961	2,875	
13	506806,804	386600,171	1,411	
14	506808,178	386600,491	3,584	
15	506829,957	386602,788	1,597	
16	506829,957	386602,788	1,597	
17	506829,955	386604,332	7,413	
18	506836,663	386606,333	2,441	
19	506839,051	386606,983	6,796	
20	506845,694	386606,691	10,451	
21	506843,197	386610,636	10,591	
A(1)=865,08mp	P=220,735m			

- LEGENDA**
- Limita zonei studiate
 - Limita de proprietate
 - subscrisa cartei de proiectie suprasus, peste siul urban si subscrisa proiectii de valoare nationala A- cuprinzand zona centrata a Cetatii Alba Iulia impreuna cu Castelul Legiunii a XIIIa Gemina, cod LMI AB-Ism-A-00001.01, pana la zidurile bastioaneilor.
 - CP1
 - CP1-c
 - CP1-ca
 - CP1-H
 - CP1-zv
 - construcții existente
 - Circulații auto
 - Circulații pietonale
 - Spații verzi amenajate - incinta
 - Acces incinta

CF 115201

No. Pkt.	Outline points coord. sides	X [m]	Y [m]	Lengths sides L(i+1)
22	506819,765	386626,935	14,501	
23	506806,738	386624,259	1,96	
24	506806,24	386621,364	3,4	
25	506803,214	386617,475	0,919	
26	506802,231	386617,008	0,32	
27	506802,392	386616,669	1,889	
28	506800,553	386616,226	1,429	
29	506800,553	386616,226	1,429	
30	506800,509	386614,942	4,467	
31	506800,509	386614,942	4,467	
32	506800,364	386610,703	46,276	
33	506842,259	386622,763	12,261	
34	506834,412	386634,709	28,517	
35	506832,789	386652,446	5,729	
36	506832,789	386652,446	5,729	
37	506842,395	386639,324	81,736	
38	506842,395	386639,324	81,736	
39	506853,533	386599,131	44,965	
40	506857,394	386610,763	3,042	
41	506860,537	386613,7	3,779	
42	506860,537	386613,7	3,779	
43	506860,535	386614,194	4,776	
44	506860,535	386614,194	4,776	
45	506860,815	386613,721	0,32	
46	506860,733	386614,03	1,128	
47	506860,815	386613,721	0,32	
48	506860,815	386613,721	0,32	
49	506871,025	386612,419	12,038	
50	506866,387	386600,342	10,904	
51	506866,387	386600,342	10,904	
52	506854,766	386623,537	0,817	
53	506854,766	386623,537	0,817	
54	506855,556	386623,747	10,834	
55	506852,746	386634,314	12,155	
56	506845,509	386637,376	6,537	
57	506845,509	386637,376	6,537	
58	506857,025	386622,577	12,201	
59	506868,233	386627,878	13,144	
60	506860,955	386631,17	1,17	
61	506860,955	386632,302	1,3	
62	506819,17	386632,655	4,101	
63	506819,17	386632,655	4,101	
64	506834,999	386637,429	2,252	
65	506854,422	386639,606	10,015	
66	506864,024	386642,859	2,147	
67	506864,024	386642,859	2,147	
68	506866,38	386640,761	3,247	
69	506866,38	386640,761	3,247	
70	506801,941	386637,946	1,201	
71	506802,243	386636,784	14,321	
72	506816,086	386640,455	10,161	
73	506813,543	386650,293	12,236	
74	506829,401	386642,957	10,469	
75	506829,401	386642,957	10,469	
76	506826,961	386643,057	4,206	
77	506830,162	386639,096	0,814	
78	506825,387	386636,818	10,845	
79	506831,988	386626,249	12,218	
80	506820,17	386625,191	1,79	
A(2)=2227mp	P=530,717m			



Beneficiar: Consiliul Județean Alba <i>mun. Alba Iulia, str. I. C. Brătianu, nr. 1, Jud. Alba</i>		faza: PUD	
Proiect: Amenajare zona cuprinsa între Sala Unirii și Muzeeul National al Unirii Alba Iulia - faza PUD <i>Jud. Alba, mun. Alba Iulia, str. Mihai Viteazul, CF 115201 și CF 115184</i>		nr. proiect: 15/2022	
denumire planșă: situația existentă		plansa: U01	
sef proiect: Stelian Ghe Flieschin <i>mun. Alba Iulia, str. I. C. Brătianu, nr. 1, Jud. Alba</i>	proiectat: Stelian Ghe Flieschin Karina Man	scara: 1:500	data: 09/2022
desenat: Karina Man			

CF 115184

No.	Phi.	Outline points coord.	Lengths sides
		X [m] Y [m]	L(i,i+1)
1		508642,627 388616,701	90,324
2		508554,816 388595,111	10,116
3		50857,157 388585,254	87,004
4		508660,092 388607,825	7,533
5		508573,358 388586,524	2,258
6		508573,322 388587,338	21,467
7		508594,659 388592,389	3,864
8		508594,659 388592,389	3,864
9		508604,128 388592,389	10,465
10		508604,128 388592,389	10,465
11		508594,137 388592,389	12,393
12		508606,111 388602,961	2,875
13		508606,111 388602,961	1,411
14		508606,178 388600,491	3,584
15		508629,957 388602,961	2,597
16		508629,957 388602,961	2,597
17		508629,957 388602,961	2,597
18		508636,663 388606,333	7,413
19		508636,663 388606,333	2,441
20		508639,051 388606,983	6,796
21		508645,694 388606,981	10,451
22		508645,694 388606,981	10,451
23		508645,197 388606,986	0,591

A(1)=865,08mp P=220,735m

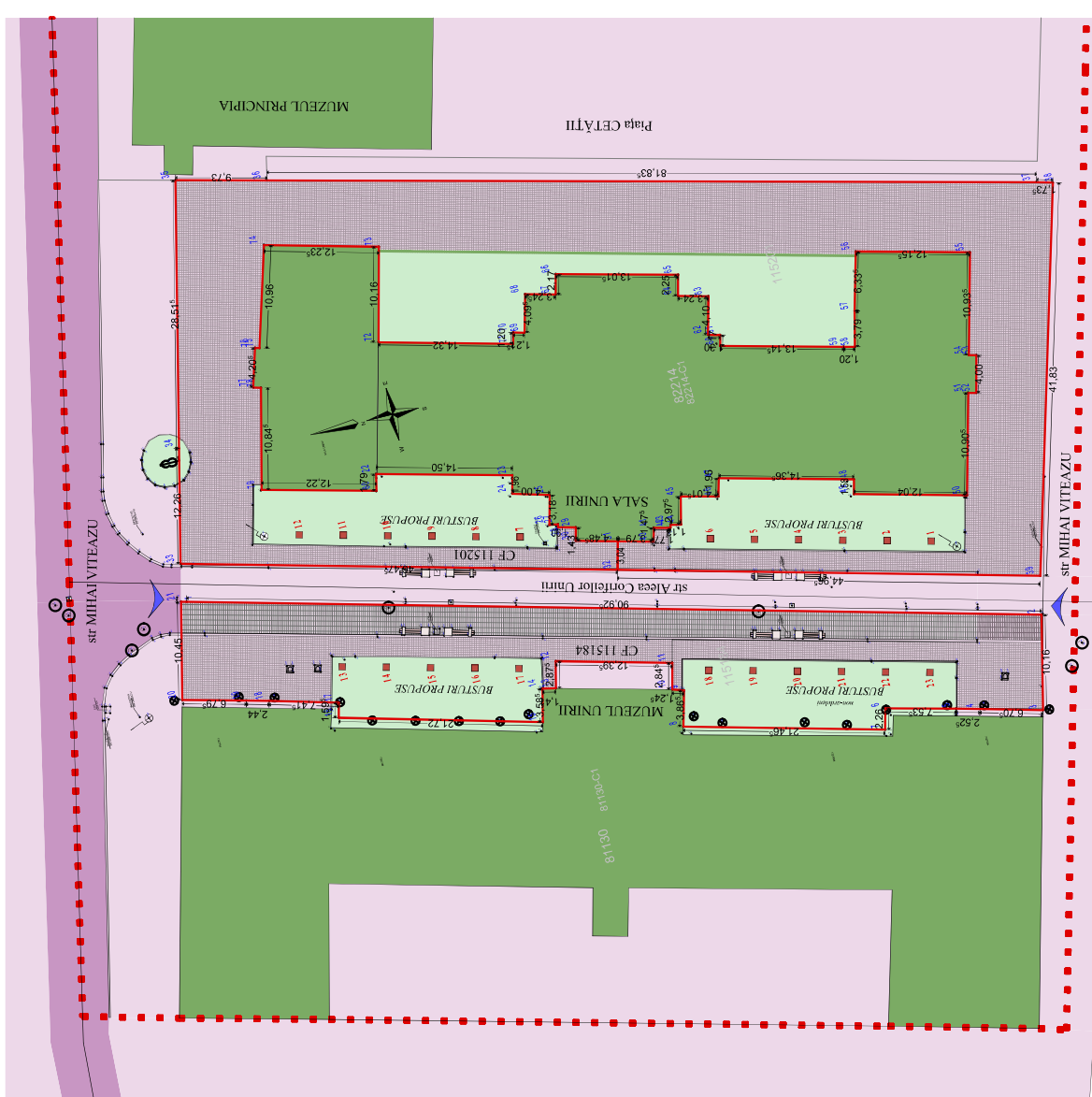
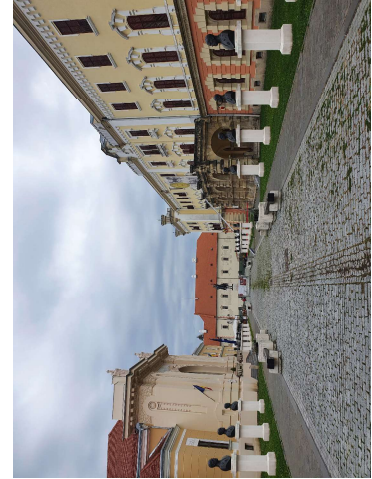
CF 115201

No.	Phi.	Outline points coord.	Lengths sides
		X [m] Y [m]	L(i,i+1)
22		508619,765 388626,935	14,501
23		508605,738 388622,259	1,96
24		508605,738 388622,259	3,4
25		508603,214 388617,175	0,919
26		508602,231 388617,008	0,32
27		508602,392 388616,689	1,889
28		508602,392 388616,226	1,429
29		508600,909 388614,192	4,467
30		508600,909 388614,192	4,467
31		508597,364 388610,763	46,276
32		508642,259 388622,783	12,261
33		508639,412 388634,709	28,517
34		508632,789 388662,446	6,729
35		508632,789 388662,446	6,729
36		508644,093 388639,819	17,26
37		508644,093 388639,819	17,26
38		508642,395 388639,24	41,931
39		508653,93 388599,131	44,965
40		508597,394 388610,763	3,042
41		508596,537 388613,7	3,79
42		508596,537 388613,7	3,79
43		508592,535 388614,194	1,776
44		508590,815 388613,721	0,32
45		508590,815 388614,03	1,128
46		508586,946 388616,085	4,016
47		508586,946 388616,085	4,016
48		508570,631 388613,649	1,58
49		508571,025 388612,419	12,038
50		508556,387 388600,342	10,804
51		508556,387 388600,342	10,804
52		508554,786 388623,537	0,817
53		508554,786 388623,537	0,817
54		508555,556 388623,747	10,834
55		508552,746 388634,314	12,155
56		508564,509 388637,376	6,537
57		508564,509 388637,376	6,537
58		508565,097 388627,577	1,201
59		508568,23 388627,878	13,144
60		508560,955 388631,17	1,17
61		508560,955 388632,302	1,3
62		508581,917 388632,655	4,101
63		508581,917 388632,655	4,101
64		508583,999 388637,459	2,252
65		508583,422 388639,606	13,015
66		508586,024 388642,859	2,17
67		508586,024 388640,761	3,247
68		508597,719 388637,152	4,994
69		508597,719 388637,152	4,994
70		508601,941 388637,946	1,201
71		508602,243 388636,784	14,321
72		508616,086 388640,455	10,161
73		508615,543 388600,293	12,236
74		508626,401 388642,957	10,465
75		508626,401 388642,957	10,465
76		508626,401 388642,957	4,206
77		508630,162 388639,066	0,814
78		508626,387 388638,818	10,845
79		508631,988 388626,219	12,218
80		508620,17 388625,191	1,79

A(2)=2227mp P=530,717m

BILANT TERITORIAL	EXISTENT		PROPOUS	
	m ²	%	m ²	%
S _{teren}	3195,00	100,00	3195,00	100,00
S _{teren urti construite}	3195,00	0,00	3195,00	0,00
S _{construite}	0,00	0,00	0,00	0,00
S _{suprafata construiti}	0	0,00	0	0,00
S _{alte - circulatii auto}	0,00	0,00	0,00	0,00
S _{alte - circulatii pietonale}	2052	64,22	2052	64,22
S _{scara verde}	1143	35,78	1143	35,78
POT	0,00%	0,00%	0,00%	0,00%
CUT	0,00	0,00	0,00	0,00

- LEGENDA**
- Limita zonei studiate
 - Limita de proprietate
 - CP1 subzona edificata peisaj, utilitatii si arhitectonice
 - CP1 impreuna cu Castrul Legiunii a X-ia Gemina, cu LMA15-H-m-K-00001,01, pana la zidurile bastionate.
- construcții existente**
- Circulatii auto
 - Circulatii pietonale
 - Spatii verzi amenajate - incinta
- Acces incinta**
- busturi propuse (categoriile de importanta D - redusa)



Consiliul Județean Alba mun. Alba Iulia, str. 1 C Brătianu, nr. 1, Jud. Alba		beneficiar: Consiliul Județean Alba mun. Alba Iulia, str. 1 C Brătianu, nr. 1, Jud. Alba	faza: PUD
self proiect: Stelian Ghe Fleschin	scara: 	proiect: National al Unirii Alba Iulia - faza PUD Jud. Alba, mun. Alba Iulia, str. Mihai Viteazu, CF 115201 si CF 115184	nr. proiect: 15/2022
proiectat: Karina Man	denumire planșă: reglementari urbanistice	denumire planșă: reglementari urbanistice	plansa: U02
desenat: Karina Man	data: 09/2022		

CF 115184

Nr. Pkt.	Outline points coord.	X [m]	Y [m]	Lengths sides L(i,i+1)
1	506642,627	386616,701	90,324	
2	506554,816	386595,111	10,16	
3	50657,157	386585,254	67,04	
4	506666,092	386607,85	7,533	
5	506573,358	386569,524	2,258	
6	506573,922	386587,338	21,467	
7	506594,659	386592,389	3,864	
8	506594,659	386592,389	3,864	
9	506594,659	386592,389	3,864	
10	506594,659	386592,389	3,864	
11	506594,137	386599,767	12,393	
12	506806,111	386602,961	2,875	
13	506806,804	386600,171	1,411	
14	506806,178	386600,491	3,584	
15	506829,957	386602,786	1,597	
16	506829,957	386602,786	1,597	
17	506829,955	386604,332	7,413	
18	506836,663	386606,333	2,441	
19	506839,051	386606,983	6,796	
20	506845,694	386606,691	10,451	
21	506845,197	386606,986	0,591	

A(1)=665,08mp P=220,735m

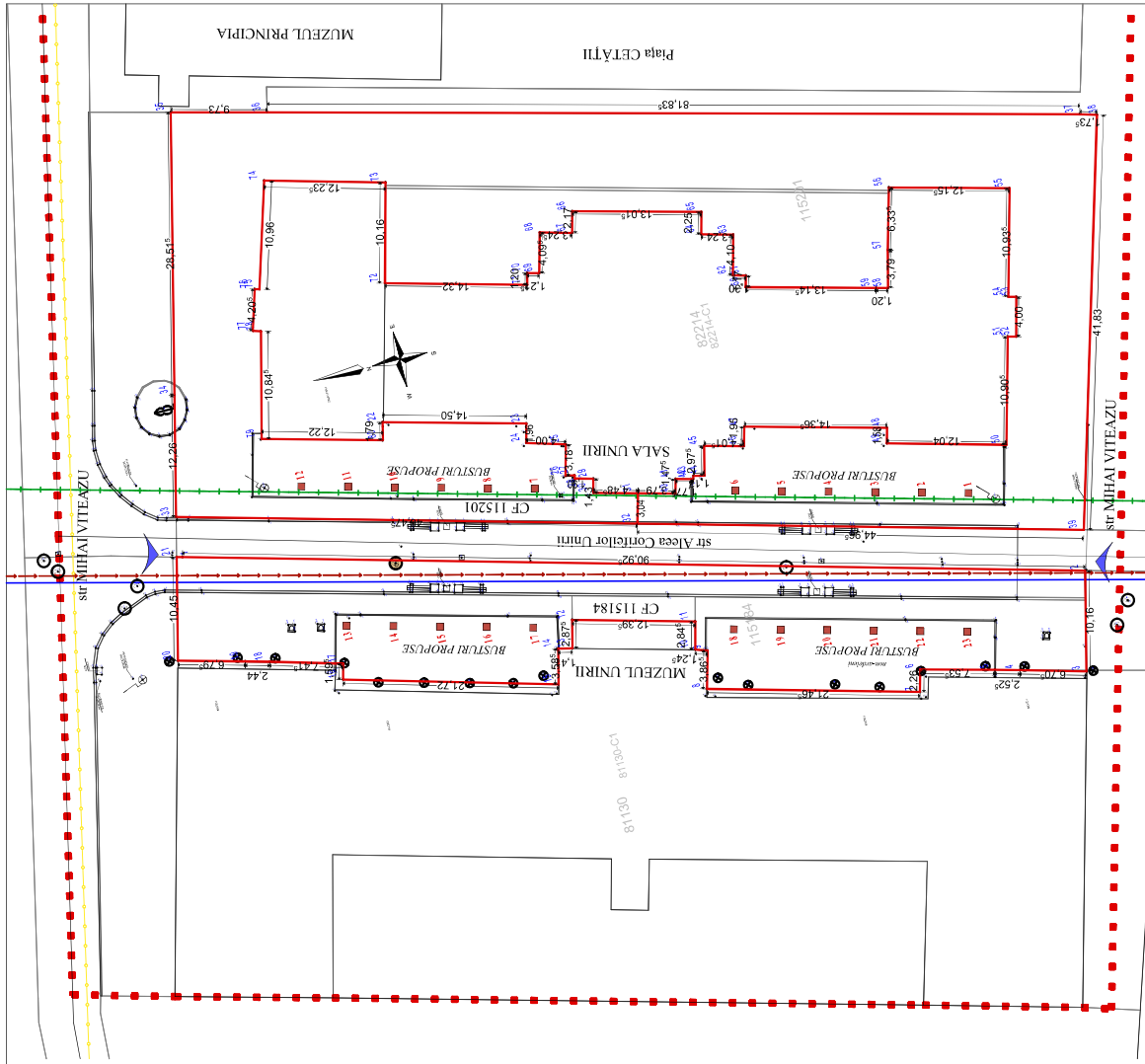
LEGENDA

- Limita zonei studiate
 Limita de proprietate
 Conducta apa - existent
 Relea canalizare - existent
 Camin de vizitare
 Conducta gaz - existent
 Relea curent
 Acces incinta
 busturi propuse
 (categoria de importanta D - redus)

CF 115201

Nr. Pkt.	Outline points coord.	X [m]	Y [m]	Lengths sides L(i,i+1)
22	506819,765	386626,935	14,501	
23	506806,738	386622,259	1,96	
24	506806,24	386621,364	3,4	
25	506803,214	386617,175	0,919	
26	506802,231	386617,008	0,32	
27	506802,392	386616,669	1,889	
28	506800,553	386610,226	1,429	
29	506800,069	386604,192	4,467	
30	506800,069	386604,192	4,467	
31	506800,069	386604,192	4,467	
32	506800,069	386604,192	4,467	
33	506842,259	386622,783	12,261	
34	506839,412	386634,709	28,517	
35	506832,789	386662,446	67,729	
36	506832,789	386662,446	67,729	
37	506842,259	386634,709	81,736	
38	506842,259	386634,709	81,736	
39	506853,53	386639,24	41,931	
40	506853,53	386639,24	41,931	
41	506857,394	386610,763	3,042	
42	506857,394	386610,763	3,042	
43	506857,394	386610,763	3,042	
44	506857,394	386610,763	3,042	
45	506857,394	386610,763	3,042	
46	506857,394	386610,763	3,042	
47	506857,394	386610,763	3,042	
48	506857,025	386612,419	12,038	
49	506857,025	386612,419	12,038	
50	506856,387	386600,342	10,904	
51	506856,387	386600,342	10,904	
52	506854,796	386623,537	0,817	
53	506854,796	386623,537	0,817	
54	506855,556	386623,747	10,934	
55	506852,746	386634,314	12,155	
56	506854,509	386637,376	6,537	
57	506854,509	386637,376	6,537	
58	506857,025	386623,537	12,201	
59	506858,223	386627,878	13,144	
60	506860,955	386631,17	1,17	
61	506860,955	386632,302	1,3	
62	506861,917	386632,655	4,101	
63	506861,917	386632,655	4,101	
64	506863,999	386632,429	2,252	
65	506863,422	386639,606	10,015	
66	506866,024	386642,859	2,247	
67	506866,024	386642,859	2,247	
68	506866,024	386642,859	2,247	
69	506866,024	386642,859	2,247	
70	506861,941	386637,946	1,201	
71	506862,243	386636,784	14,321	
72	506816,086	386640,455	10,161	
73	506813,543	386600,293	12,236	
74	506829,957	386602,786	10,451	
75	506829,957	386602,786	10,451	
76	506829,957	386602,786	10,451	
77	506830,162	386639,066	4,206	
78	506825,387	386636,818	10,945	
79	506831,988	386629,29	12,218	
80	506820,17	386625,191	1,79	

A(2)=2227mp P=530,717m



Consiliul Județean Alba
mun. Alba Iulia, str. I. C. Brătianu, nr. 1, Jud. Alba

beneficiar:
Consiliul Județean Alba
mun. Alba Iulia, str. I. C. Brătianu, nr. 1, Jud. Alba

faza:
PUD

sef proiect:
Stelian Gheorghie M. Fleschin

proiect:
Amplasarea zonei cuprinse între Sala Unirii și Muzeul National al Unirii Alba Iulia - faza PUD
Jud. Alba, mun. Alba Iulia, str. Mihai Viteazul, CF 115201 și CF 115184

scara:
1:500

nr. proiect:
15/2022

proiectat:
Ing. Radu Enache

denumire planșă:
reglementari echipare edilărită

data:
09/2022

plansa:
U03

desenat:
Ing. Radu Enache

CF 115184

Nr. Pkt.	Outline points coord.	X [m]	Y [m]	Lengths sides L(i+1)
1	508642,627	386816,701	90,324	
2	508554,816	386956,111	10,16	
3	50857,157	386862,254	67,04	
4	508656,092	386897,825	7,533	
5	508573,358	386566,524	2,258	
6	508573,922	386897,338	21,467	
7	508594,659	386992,389	3,864	
8	508594,659	386992,389	3,864	
9	508594,183	386992,18	2,413	
10	508594,183	386992,18	2,413	
11	508594,137	386992,767	12,393	
12	508606,111	386902,961	2,875	
13	508606,804	386906,171	1,411	
14	508608,178	386900,491	3,584	
15	508629,957	386902,788	1,597	
16	508629,957	386902,788	1,597	
17	508629,555	386904,332	7,413	
18	508636,663	386906,332	2,441	
19	508639,051	386906,983	6,796	
20	508645,694	386906,691	10,451	
21	508645,197	386906,696	0,591	

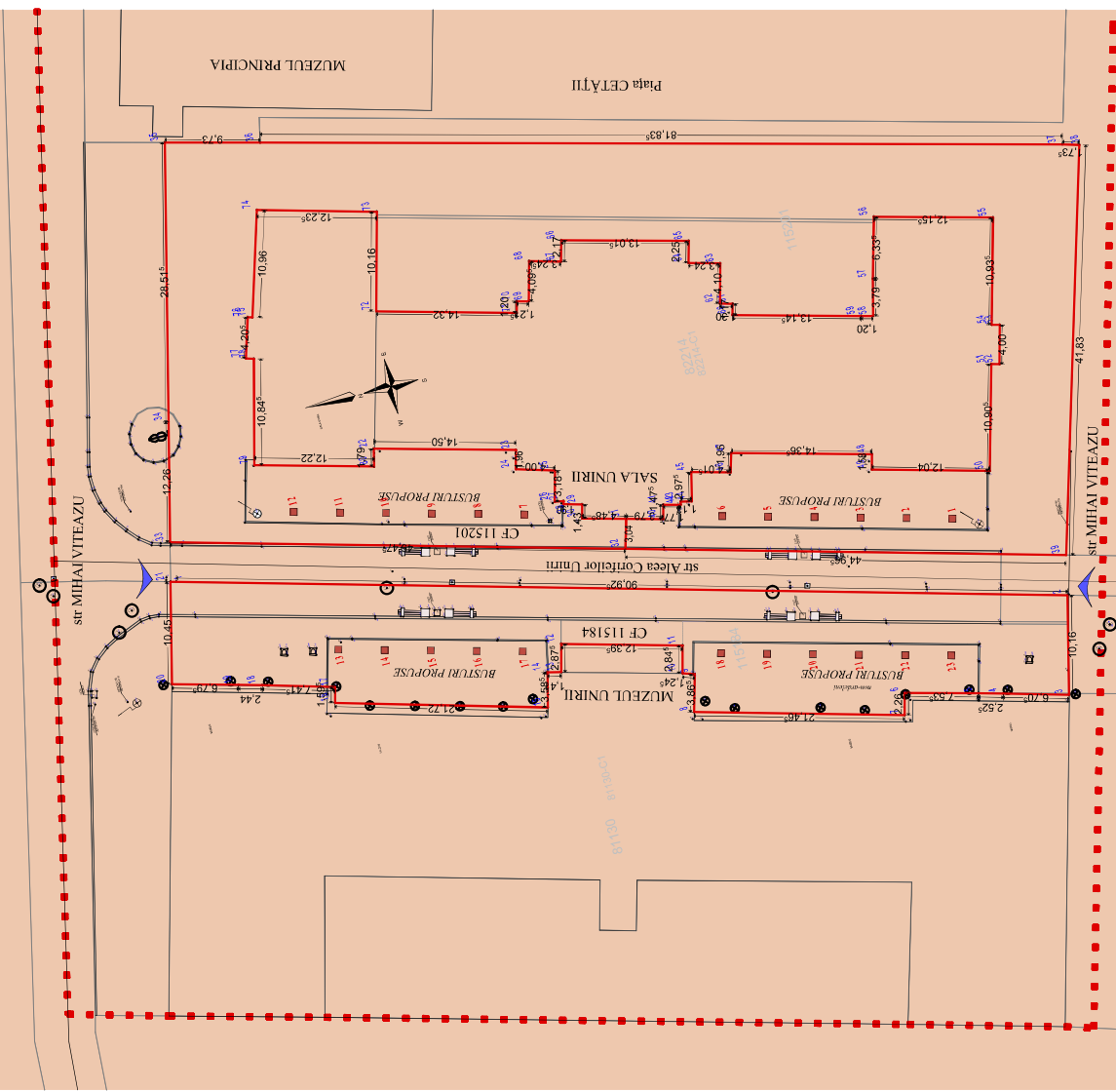
A(1)=865,08mp P=220,785m

- LEGENDA**
- Limita zonei studiate
 - Limita de proprietate
 - Terenuri proprietate publica de interes local
 - ▲ Acces incinta
 - Incalziri proprietas (categoria de incalzirea D - reduc)

CF 115201

Nr. Pkt.	Outline points coord.	X [m]	Y [m]	Lengths sides L(i+1)
22	508619,765	386826,935	14,501	
23	508606,738	386822,259	1,96	
24	508602,24	386827,364	3,4	
25	508603,214	386817,175	0,919	
26	508602,21	386817,008	0,32	
27	508602,392	386816,689	1,889	
28	508600,553	386816,226	1,429	
29	508600,369	386814,192	4,467	
30	508600,369	386814,192	4,467	
31	508597,364	386810,763	46,276	
32	508642,259	386822,783	12,261	
33	508639,412	386834,709	28,517	
34	508632,789	386862,446	6,729	
35	508645,197	386906,696	81,736	
36	508645,197	386906,696	81,736	
37	508642,395	386939,24	41,931	
38	508653,53	386956,131	44,965	
39	508657,394	386810,763	3,042	
40	508662,57	386813,7	3,79	
41	508662,57	386813,7	3,79	
42	508662,535	386814,194	1,776	
43	508660,815	386813,721	0,32	
44	508660,733	386814,03	1,128	
45	508660,946	386816,085	4,016	
46	508660,946	386816,085	4,016	
47	508664,53	386817,569	14,363	
48	508670,631	386813,649	1,58	
49	508671,025	386812,419	12,038	
50	508656,387	386900,342	10,904	
51	508656,387	386900,342	10,904	
52	508654,786	386823,537	0,817	
53	508654,786	386823,537	0,817	
54	508655,556	386823,747	10,834	
55	508652,746	386834,314	12,155	
56	508645,509	386837,376	6,537	
57	508657,097	386822,577	1,201	
58	508657,097	386822,577	1,201	
59	508668,23	386827,878	13,144	
60	508660,955	386931,17	1,17	
61	508660,955	386932,302	1,3	
62	508619,17	386826,655	4,101	
63	508639,999	386832,429	2,252	
64	508639,999	386832,429	2,252	
65	508653,422	386839,606	13,015	
66	508660,024	386842,859	2,147	
67	508656,38	386940,761	3,247	
68	508656,38	386940,761	3,247	
69	508607,19	386817,552	4,064	
70	508607,19	386817,552	4,064	
71	508602,243	386836,784	14,321	
72	508616,086	386840,455	10,161	
73	508613,543	386900,293	12,236	
74	508629,491	386842,957	10,465	
75	508629,491	386842,957	10,465	
76	508626,961	386843,097	4,206	
77	508630,162	386839,066	0,814	
78	508626,387	386836,818	10,845	
79	508631,988	386926,29	12,218	
80	508620,17	386825,191	1,79	

A(2)=2227mp P=530,177m



Consiliul Judetean Alba mun. Alba Iulia, str. I. C. Bratianu, nr. 1, jud. Alba		Consiliul Judetean Alba mun. Alba Iulia, str. I. C. Bratianu, nr. 1, jud. Alba	
sef proiect:	Stelian Ghe Fleschin	scara:	1:500
proiectat:	Stelian Ghe Fleschin	nr. proiect:	15/2022
desenat:	Karina Man	denumire plansa:	proprietatea asupra terenurilor
		data:	09/2022
		plansa:	U04
		faza:	PUD